



FEMA Guidance for Education, Government and Health Care Entities During COVID-19

April 10, 2020



Jean Demchak
Managing Director
Education & Public Entity Practice Leader
Marsh

FEMA Guidance during COVID-19

Today's Panel



Daniel Kaniewski
Managing Director
Public Sector
Marsh & McLennan Advantage

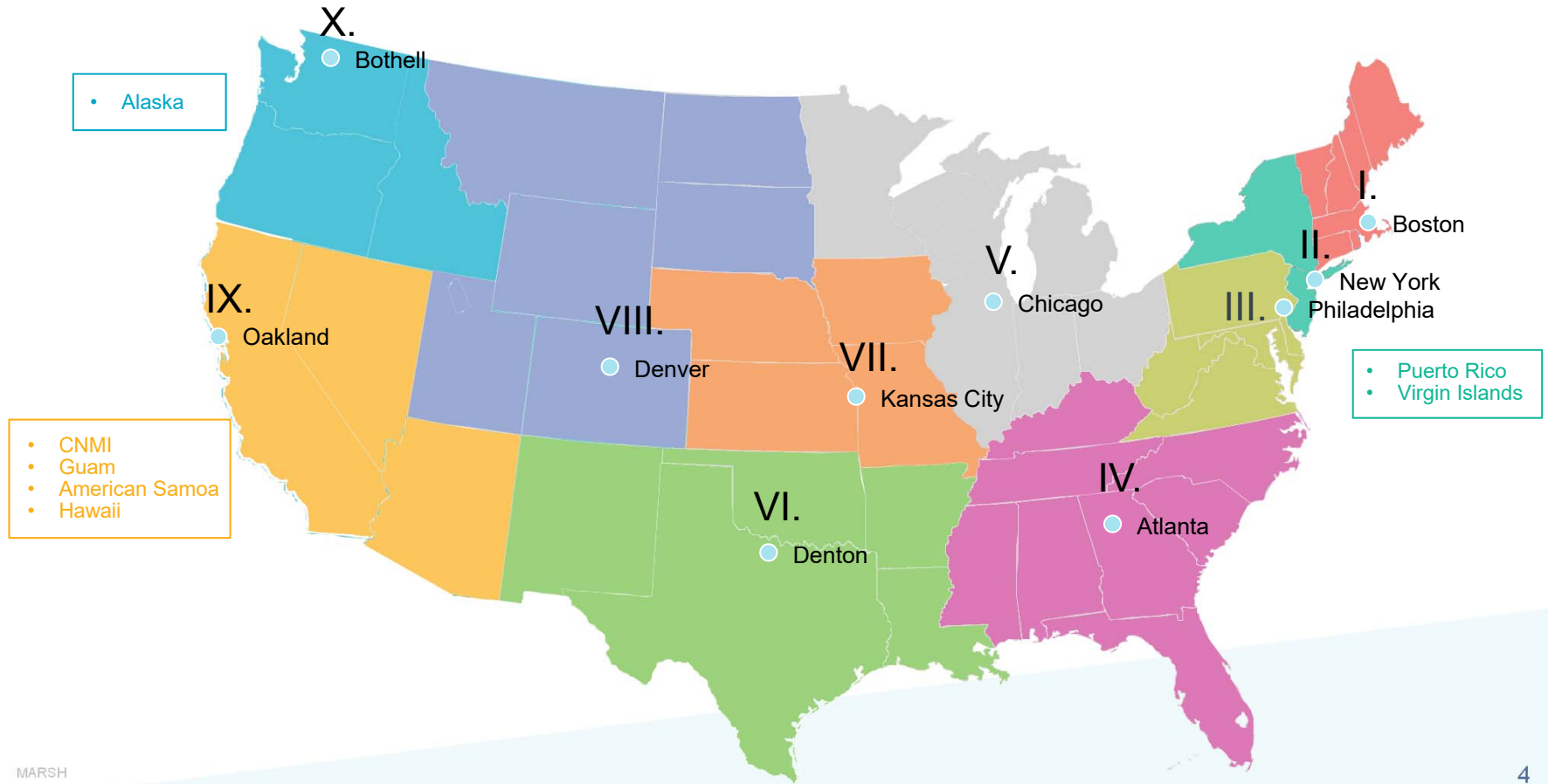


Kerri Owens
Forensic Accounting and
Claims Services (FACS)
Marsh Risk Consulting



Cynthia Hubert
Forensic Accounting and
Claims Services (FACS)
Marsh Risk Consulting

FEMA Overview



FEMA's Role

[The Robert T. Stafford Disaster Relief and Emergency Assistance Act](#) is the statutory authority for most Federal disaster response activities, especially as they pertain to the Federal Emergency Management Agency (FEMA) and FEMA programs.

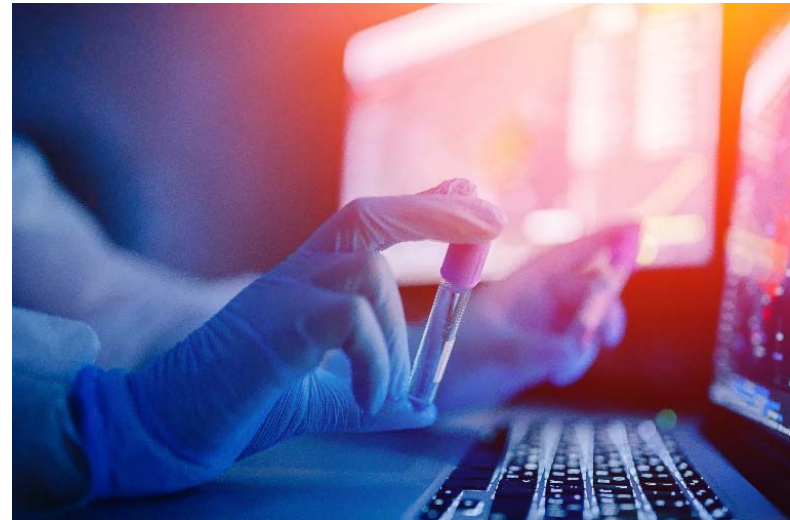
FEMA's typical disaster role is as a coordinator and resource provider:

- Coordinates federal response.
 - Federal agencies.
 - States.
- Provides resources to state and local governments.
 - Physical resources:
 - Personnel, equipment, supplies.
 - Financial resources:
 - For most major disasters, it's simply a financial transaction where FEMA reimburses state and local governments and eligible non-profits for the costs they incurred responding to and recovering from disasters.

Coronavirus Response

Coronavirus is not a typical disaster.

- It's a communicable disease that isn't constrained to any one geographic area.
 - Hurricane might strike a state, or perhaps several states.
 - All 50 states could be impacted by coronavirus.
- Resources need to be appropriately tailored.
 - Congregate sheltering generally not an option.
 - Personal protective equipment necessary.



Public Assistance Responsibilities

Successful execution of the FEMA Public Assistance program requires close coordination between all parties.

- FEMA.
 - Headquarters.
 - Regions.
- The Recipient (the State).
 - Subrecipients (“Applicants” for funding).
 - State agencies.
 - Municipal governments.
 - Eligible private non-profits.

FEMA Programs

President Trump declared a national emergency on March 13 that triggered an emergency declaration under the Stafford Act.

- Subsequently, each state has requested and been granted a major disaster under the Stafford Act.
- The nationwide emergency declaration and states' major disaster declarations all authorize category B emergency protective measures under the FEMA public assistance program.
 - FEMA authorized to reimburse category B expenses at a 75% federal / 25% state cost share.
 - FEMA authorized to provide direct federal assistance as required.
- The FEMA administrator has the authority to add additional categories of assistance under the FEMA public assistance and individual assistance programs in the future.

FEMA Guidance

FEMA has produced specific guidance based on the unique circumstances of the coronavirus response:

- **Eligible Emergency Protective Measures** <https://www.fema.gov/news-release/2020/03/19/coronavirus-covid-19-pandemic-eligible-emergency-protective-measures>
- **Private Non Profit Organizations** <https://www.fema.gov/news-release/2020/04/02/coronavirus-covid19-pandemic-private-nonprofit-organizations>
- **Non-Congregate Sheltering** <https://www.fema.gov/news-release/2020/03/31/coronavirus-covid-19-pandemic-non-congregate-sheltering>
- **Emergency Medical Care** <https://www.fema.gov/news-release/2020/03/31/coronavirus-covid-19-pandemic-emergency-medical-care>

FEMA Guidance during COVID-19

Marsh Forensic Accounting and Claims Services (FACS)



Kerri Owens

Forensic Accounting and
Claims Services (FACS)
Marsh Risk Consulting

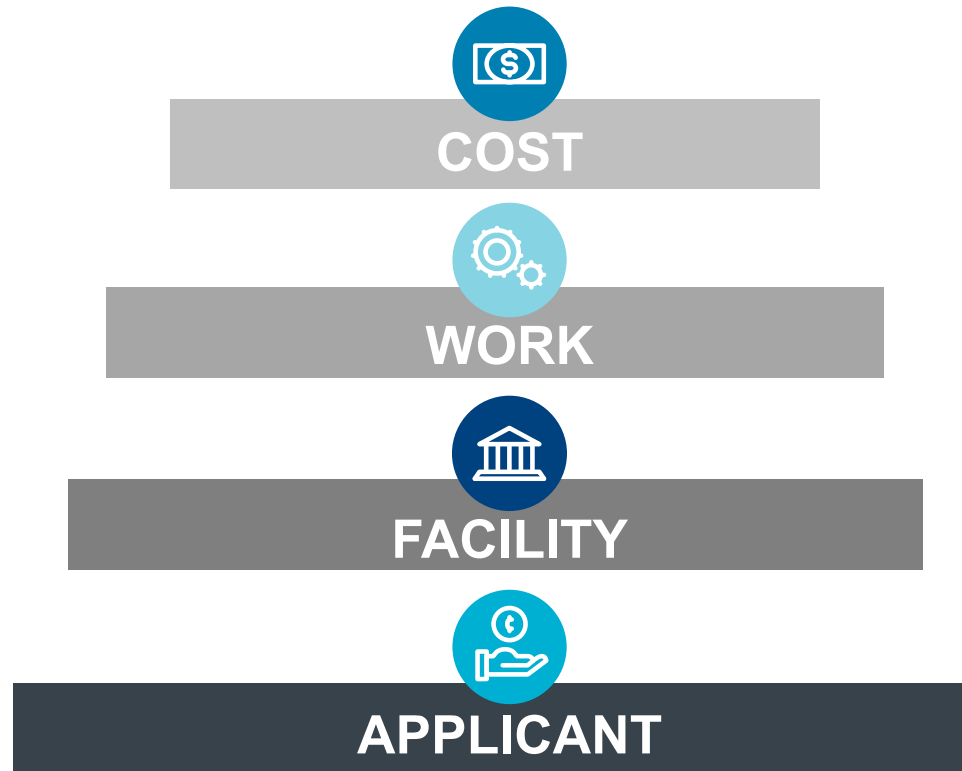


Cynthia Hubert

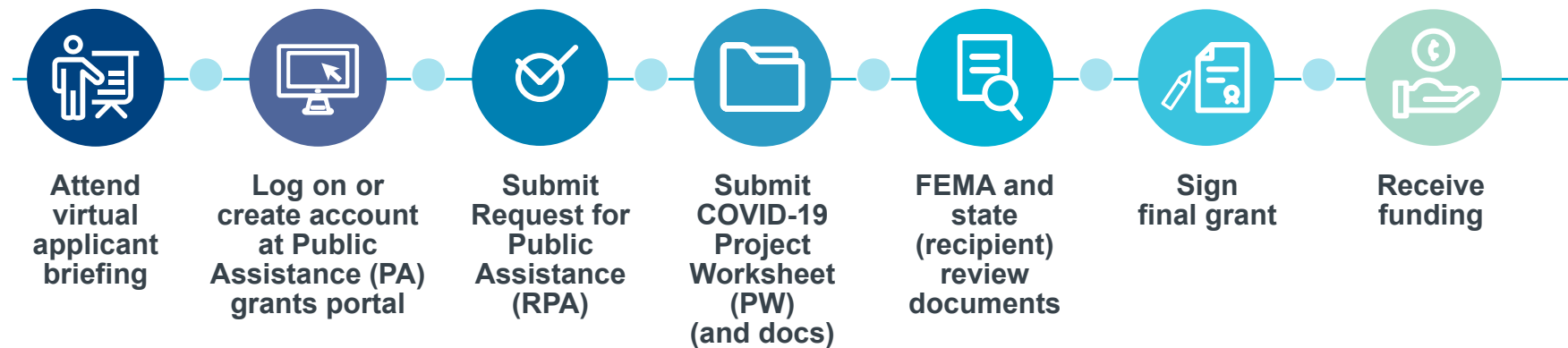
Forensic Accounting and
Claims Services (FACS)
Marsh Risk Consulting

Public Assistance Eligibility

Four Tiers of Eligibility – All Must Be Eligible to Obtain FEMA Funding



Public Assistance Process and Timeline



Public Assistance Process and Timeline

- Initiate contact with the state(s) in which you operate (i.e. NYSDHSES or NJOEM).
- Attend or download Applicant Briefing that will contain important state specific information.
- File Request for Public Assistance and gain access to the Grant Portal.
- Important to note – normally there is a 30 day deadline from the date of declaration to file an RPA. That deadline has been lifted for the time being. States will advise of RPA deadline when it is established.

Public Assistance Process and Timeline

- Program Delivery Manager (PDM) will be assigned.
- You will work with PDM throughout the process to prepare Project Worksheets and submit necessary information & documentation.
- You will uploading documents to Grants Portal however, you must maintain your own, separate file for audit purposes.
- Current incident period is Jan 20, 2020 through Sep. 20, 2020 (end date subject to extension).
- Final grant review including reconciliation of all funding streams, appeal process if necessary, final funding and close out.


Procurement and Contract

- All contracts and purchases must comply with all local, State and Federal procurement requirements.
 - Competitively bid contracts are preferred.
 - Some requirements may be relaxed due to circumstances of COVID-19 (i.e. Procurement under Exigent or Emergency Circumstances).
 - Trying to extend the “exigent” period to avoid procurement requirements (i.e. competitive bidding) is an audit red flag.
- Restrictions on Contracts.
- Management Costs.



Project Worksheets

- Project Sizes
 - Minimum Threshold = \$3,300
 - Small Project < \$131,100
 - Project Worksheet (PW) is written on Estimated or Actual Cost.
 - Paid upon Project Worksheet (PW) obligation.
 - Large Project > \$131,100
 - Paid based on % of work completed.
- Information Required.
- Appeals Process.



Post-Loss Business Recovery Management: FEMA COVID-19 Claims Support for Public Entities

As COVID-19 continues to spread, the resources and employees of public entities are being stretched thinner and thinner. Successful recovery from the catastrophic, bottom line impacts of the COVID-19 pandemic is essential to your public entity's community, employees, finances, and operations.

Marsh Risk Consulting's (MRC) Forensic Accounting and Claims Services (FACS) Practice can provide you with the precise support needed to manage the vast number of claims-related issues that may follow COVID-19 and help you achieve a timely recovery and/or mitigate your loss. We have prepared hundreds of complex insurance and Federal Emergency Management Agency (FEMA) claims after recent major disaster declarations for numerous US public entities including, but not limited to, states and state agencies, county governments, cities, higher education school systems, hospitals, and risk pools. Our ability to support you with COVID-19 pandemic claims is unique. FACS offers expert claims leadership and resources needed during and in the wake of COVID-19 to calculate, defend against, and analyze damages – helping you to achieve a timely recovery and stay focused on your public duties.

COVID-19 FEMA Response and Claims Preparation

On March 13, 2020, President Trump declared a national emergency pursuant to Section 10102 of the Stafford Act. State, territorial, tribal and local government entities and certain private non-profit organizations are eligible to apply for assistance under the FEMA Public Assistance Program. The subsequent COVID-19 emergency declaration also increases federal support to the whole lower half from handling the ongoing federal response to the pandemic.

WHO IT'S FOR

Any eligible public entity across the United States with:

- Losses related to COVID-19
- Limited in-house or on-the-ground capabilities and resources to manage the insurance and FEMA claims process.
- A need for timely and effective recovery following COVID-19.

WHAT YOU GET

- Prompt support following a COVID-19 disaster anywhere in the United States.
- Highly qualified accounting professionals and claims consultants with extensive experience in across geographies and public entity sectors.
- Using our proprietary technology, our insurance and FEMA claims and litigational counsel teams, between all parties involved in the recovery process.
- Efficient management of over the most complex insurance and FEMA claims so that you can focus on your community, employees, and public operations.

MARSH

Additional Resources

- **Marsh Hub:**
<https://www.marsh.com/us/insights/research/pandemic-risk-hub.html>
- **FEMA COVID-19 Resources:**
<https://www.fema.gov/coronavirus>
- **FEMA Public Assistance Program:**
<https://www.fema.gov/public-assistance-local-state-tribal-and-non-profit>
- **FEMA Grants Portal:** <https://grantee.fema.gov/>
- **FEMA Procurement Assistance:**
www.fema.gov/procurement-disaster-assistance-team
- **To check on contractor status:**
www.SAM.gov

FACT SHEET
Coronavirus (COVID-19) Pandemic: Public Assistance Simplified Application

The fact sheet supplements FEMA's Coronavirus (COVID-19) Pandemic emergency protective assistance and provides an overview of the FEMA Public Assistance application process for eligible and appropriate emergency reconstruction related to health, emergency, and major disaster operations for coronavirus (COVID-19). FEMA is simplifying the Public Assistance application and funding process to address the magnitude of the work and allow your officials to receive eligible funding more quickly.

FEMA is simplifying the Public Assistance application process. FEMA is streamlining simplified online form applications for projects, and if you still use the paper work, we have been updating forms to make the application and funding process easier. FEMA will accept all applications that were submitted to FEMA as of 10:00 PM on 3/16/2020. FEMA will accept all applications that were submitted to FEMA as of 10:00 PM on 3/16/2020.

The regional emergency assistance authorized Public Assistance Design & Implementation for emergency protective assistance. FEMA will accept additional applications for projects, such as emergency repair and replacement, that are related to the eligible disaster. The FEMA Public Assistance will accept applications for projects designed for these categories, including all existing buildings, with necessary funding changes and from the requirements and existing documentation requirements to the minimum required to support Category B projects.

Response are made within 10 business days of receipt of all required Public Assistance forms. Applicants are asked to submit a copy of the application, a copy of the FEMA Public Assistance Design & Implementation form, and a copy of the FEMA Public Assistance Design & Implementation form to FEMA. FEMA will accept all applications that were submitted to FEMA as of 10:00 PM on 3/16/2020.

Eligible and appropriate for FEMA Public Assistance and eligible applicants for which FEMA will accept FEMA Public Assistance. FEMA is simplifying the process as assistance may submit applications through the FEMA Public Assistance.

As FEMA and applicants implement these changes, FEMA will continue to process and fund Public Assistance projects. Funding is provided to eligible applicants, which, depending on your office, may include emergency assistance. Prior to funding, response to the FEMA Public Assistance Design & Implementation form, FEMA will accept all applications that were submitted to FEMA as of 10:00 PM on 3/16/2020.

FEMA

FEMA FACT SHEET
Coronavirus (COVID-19) Pandemic: Emergency Medical Care

The FEMA COVID-19 Emergency Protective Measures Fact Sheet included a list of eligible emergency medical care activities. This fact sheet provides additional guidance related to the eligibility of emergency medical care activities as an emergency protective measure under the Emergency Declaration and any Major Disaster Declaration authorizing Public Assistance (PA) for COVID-19.

General Eligibility Considerations for Emergency Medical Care

Under the President's March 13 emergency declaration, and subsequent major disaster declarations, FEMA, HHS, DHS, and FEMA (D-17) government entities are eligible to provide for public health operations as eligible for PA.

Eligible emergency protective measures relate to response to the COVID-19 emergency at the direction or guidance of public health officials who are authorized under the Emergency Declaration on March 13, 2020. FEMA issued the COVID-19 Emergency Protective Measures Fact Sheet which defines the types of emergency protective measures that are eligible under the program in accordance with the COVID-19 Emergency Declaration.

Some eligible measures for emergency medical care activities apply to all states and associated costs. The measures include, but are not limited to, the following:

Applicant Eligibility

All 50 government entities are eligible to apply for PA. Certain PAH organizations are eligible to apply for PA, including those that are not state or local government entities.

Private for-profit entities, including for-profit hospitals, are not eligible for assistance from FEMA under PA. All 50 government entities may continue to use the program to apply for eligible emergency protective measures. FEMA will continue the eligible support for the cost of eligible work, and the applicant will pay the private entity for the purchase of services.

Facility Eligibility

For PA, government, including facility eligibility is not necessary for most emergency work. PAHs are generally

FEMA

FEMA COVID-19 Emergency Declaration

Navigation

Release date: March 13, 2020

Release Number: HC-20-017-RestSheet

On March 13, 2020, the President declared the ongoing Coronavirus Disease 2019 (COVID-19) pandemic of sufficient severity and magnitude to warrant an emergency declaration for all states, territories, and the District of Columbia pursuant to section 501 (b) of the Robert T. Stafford Disaster Relief and Emergency Assistance Act, 42 U.S.C. 5121-5127 (the "Stafford Act"). State, Territorial, Tribal, local government entities and certain private non-profit (PNS) organizations are eligible to apply for Public Assistance.

In accordance with section 502 of the Stafford Act, eligible emergency protective measures taken in response to the COVID-19 emergency at the direction or guidance of public health officials may be reimbursed under Category B of the ongoing Public Assistance program. FEMA will not duplicate assistance provided by the Department of Health and Human Services (HHS), including the Centers for Disease Control and Prevention, or other federal agencies. This includes necessary emergency protective measures for activities taken in response to the COVID-19 incident. FEMA assistance will be provided at the 75 percent Federal cost share.

FEMA

FACT SHEET
Coronavirus (COVID-19) Pandemic: Eligible Emergency Protective Measures

Consistent with the President's national emergency declaration for the coronavirus (COVID-19) pandemic on March 13, 2020, FEMA urges officials to, without delay, take appropriate actions that are necessary to protect public health and safety pursuant to public health guidance and conditions and capabilities in their jurisdictions. FEMA provides the following guidance on the types of emergency protective measures that may be eligible under FEMA's Public Assistance Program in accordance with the COVID-19 Emergency Declaration in order to ensure that resource constraints do not inhibit efforts to respond to the unprecedented disaster.

FEMA Public Assistance Program

In accordance with section 501 of the Robert T. Stafford Disaster Relief and Emergency Assistance Act, 42 U.S.C. 5121-5127 (the "Stafford Act"), eligible emergency protective measures taken in response to the COVID-19 emergency at the direction or guidance of public health officials may be reimbursed under Category B of FEMA's Public Assistance program. FEMA will not duplicate assistance provided by the U.S. Department of Health and Human Services (HHS), including the Centers for Disease Control and Prevention (CDC), or other federal agencies.

Some measures, under the FEMA Public Assistance program and certain private non-profit organizations are eligible to apply for Public Assistance. FEMA assistance will be provided at a 75 percent Federal cost share. The assistance will be provided at the FEMA Public Assistance program, as determined and approved for assistance under the program. Local government entities and certain private non-profit organizations are eligible to apply for assistance under the program.

Eligible Assistance

Under the COVID-19 Emergency Declaration issued by FEMA, FEMA may provide assistance for emergency protective measures including, but not limited to, the following: FEMA will not provide assistance for emergency protective measures that are not eligible for funding through FEMA's COVID-19 Emergency Declaration. FEMA will not duplicate any assistance provided by HHS/CDC.

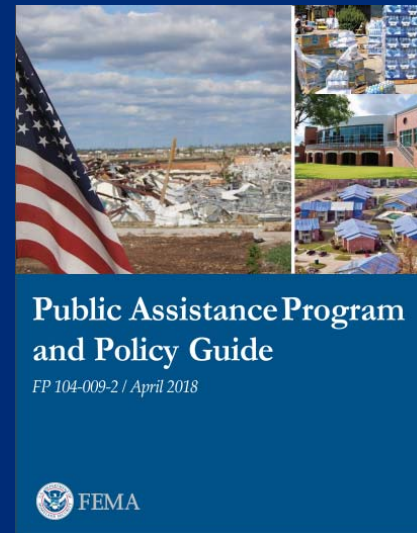
- Major public health and safety activities that are necessary to protect public health and safety.
- Emergency Declaration Declaration

FEMA

Q&A

To submit a question, click on the **Q&A** button on the bottom of your screen.

If your question is not answered during today's program, someone from Marsh will respond as soon as possible.



FEMA Guidance during COVID-19

Answering Your Questions



Jean Demchak
Managing Director,
Education/Public Entity
Practice Leader
Marsh



Daniel Kaniewski
Managing Director
Public Sector
Marsh & McLennan Advantage



Cynthia Hubert
Forensic Accounting and
Claims Services (FACS)
Marsh Risk Consulting



Kerri Owens
Forensic Accounting and
Claims Services (FACS)
Marsh Risk Consulting



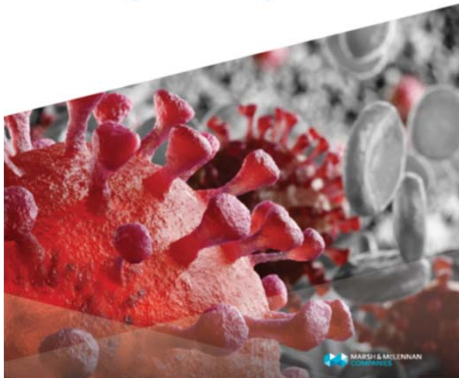
Ryan Stykel
Forensic Accounting and
Claims Services (FACS)
Marsh Risk Consulting

Managing COVID-19 Risks

MARSH

PANDEMIC REPORT | MARCH 2020

COVID-19: Evolving
Insurance and Risk
Management Implications



Visit our Pandemic Risk Hub on marsh.com for the latest from Marsh and other Marsh & McLennan businesses, including our new report on COVID-19 insurance coverage, claims, and risk management considerations.

Join us again on **Wednesday, April 22**, for more information and insights on how you can manage your risk as the pandemic continues. Visit marsh.com to register.

MARSH



Marsh is one of the Marsh & McLennan Companies, together with Guy Carpenter, Mercer, and Oliver Wyman.

This document and any recommendations, analysis, or advice provided by Marsh (collectively, the "Marsh Analysis") are not intended to be taken as advice regarding any individual situation and should not be relied upon as such. The information contained herein is based on sources we believe reliable, but we make no representation or warranty as to its accuracy. Marsh shall have no obligation to update the Marsh Analysis and shall have no liability to you or any other party arising out of this publication or any matter contained herein. Any statements concerning actuarial, tax, accounting, or legal matters are based solely on our experience as insurance brokers and risk consultants and are not to be relied upon as actuarial, tax, accounting, or legal advice, for which you should consult your own professional advisors. Any modeling, analytics, or projections are subject to inherent uncertainty, and the Marsh Analysis could be materially affected if any underlying assumptions, conditions, information, or factors are inaccurate or incomplete or should change. Marsh makes no representation or warranty concerning the application of policy wording or the financial condition or solvency of insurers or reinsurers. Marsh makes no assurances regarding the availability, cost, or terms of insurance coverage. Although Marsh may provide advice and recommendations, all decisions regarding the amount, type or terms of coverage are the ultimate responsibility of the insurance purchaser, who must decide on the specific coverage that is appropriate to its particular circumstances and financial position.

Copyright © 2020 Marsh LLC. All rights reserved.